



Arrowbear Music Camp



2nd Intermediate Session!

July 28th-August 10th, 2024



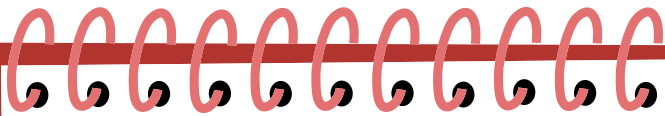
Session Information Packet



Pre Camp Checklist



- Balance paid- due in full by July 23rd
- Packing list double checked
- Online Health Form completed by July 23rd
- Medications and original medication container ready to turn in
- Get ready to have an AMAZING time!!!



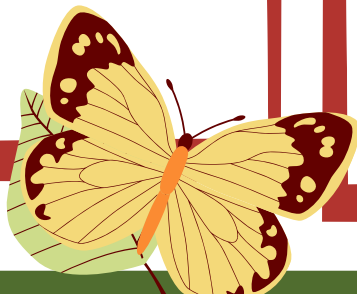
Packet Contents

- Arrival & Departure Information
- Address & Driving Directions
- Tuition Balance
- Medical Form & Medications
- General Camp Information-
 - Musical Introduction
 - Mail
 - Email
 - Cell phones
 - Online camp photo album
 - Camp group photo and roster
 - Camp store
 - Laundry
 - Visiting Policies
- Packing List



Information at a glance

- Camp office phone: 909-867-2782
- Larke Dockstader's cell phone: 562-225-7766
- July 23rd: session balance and health form due
- July 28th: Arrival, check in falls between 2:30pm and 4:00pm. Please see email body for specific time.
- August 10th: Pick up day-5pm concert
- Camp's mailing address: PO Box 180, Running Springs, CA 92382
- Camp's physical address 33500 Music Camp Rd., Arrowbear Ik, CA 92382



Arrival and Departure Information:

First Day of Camp- July 28th- check email body for drop-off time

- Arrival-July 28th
- Check in between 2:30pm and 4pm- see email body for specific arrival time
- Check in station will be located on the camp porch and will include:
 - Sign in- make name tag, turn in cash for snack bar if needed, make sure balance is paid
 - Meet with camp Health Supervisor for medical check-in/temp check, and turn in medications
 - Lice check with friendly camp counselor- will be set up in private location
 - Say goodbye to your family and join a counselor and small camper group for 1st mixer



Last Day of Camp- August 10th- Final Concert 5pm:

- Last Day of Camp- Saturday August 10th
- The Final Concert will be held at 5pm on campus. Guests may arrive anytime after 3:30pm to visit and load luggage. Please do not arrive early as our program will still be in session.

Carpool

If you are interested in carpooling, please let us know and we will email your name, contact info, and location to everyone on our 1st Intermediate Session roster.

Address and Driving Directions to Camp

Physical address: 33500 Music Camp Rd, Arrowbear Lk, CA 92382

**If you have not been to the camp before,
please bring a copy or screen shot of these directions with you.
GPS is questionable in our area.**

1. From I-210 in Highland, take HWY 330 towards Big Bear. After winding up the mountain road, continue through the small towns of Running Springs and Arrowbear.
2. Turn right at the second Arrowbear Drive. On the corner you will see Victoria's Restaurant. If you reach a sign for Green Valley or Snow Valley Ski Resort, you have gone too far.
3. Stay to the left of the small pond (it may be dried up by late July) and continue up Music Camp Road until you reach the camp. We have a large green and brown "Arrowbear Music Camp" sign at the entrance to the camp.
4. Follow signs to the check-in station.

Tuition Balance

Payment is due in full by July 23rd

Medical Form & Medications

Please make sure your online medical form is up to date. Our Medical Supervisor will go over it with you during check in.

All medications must be turned into the Camp Health Supervisor during check in. This includes over the counter medications and is for legal compliance and camp safety. Medications MUST be in their original, labeled containers or they will not be administered. If you transfer pills into daily pill containers, make sure to provide the original prescription bottle.

General Camp Information:

Musical Introduction

Within the first few days of camp, each camper will meet with our music staff for a musical introduction. This will help our teachers understand the needs of each camper. If there are things on this list that you do not know, please do not worry- just do your best. Camp is a very supportive and noncompetitive environment. We are all here to learn.

In preparation, please work on the following:

Strings:

1. C, G, D, F, and Bb Major Scales- as many octaves as you can play well
2. A short excerpt from a current solo or orchestral work

Winds:

1. Bb, F, Eb, G, and D major scales- 1 or 2 octave chromatic scale
2. Demonstration from both a fast piece/excerpt and a slow piece/excerpt

Percussion

(If you have not been introduced to the instruments and skills listed below, do not worry- they are not required- you will learn while here).

1. Snare drum technique
2. Mallet instrument skill level
3. Timpani technique/ tuning



Communication with your camper

Old fashioned snail mail

Campers love to receive mail while at camp!

Please send to-

Camper's Name

c/o Arrowbear Music Camp

PO Box 180

Running Springs, CA 92382

Any mail that arrives after the session ends will be mailed to camper.

Alternatively, family and friends are welcome to leave mail & packages with the camp office to be placed in the camper's mailbox on a specific day.

Cell Phones

All campers will be very busy playing music, making friends, and enjoying the camp/ mountain atmosphere. We highly recommend that you leave your cell phone and other electronic devices at home.

We truly believe that camp is a more fulfilling experience for campers when cell phones are not involved. They really do distract from total involvement in the experience. With that said, we have done our best to find a happy medium to accommodate those who feel that communication during the session is necessary.

For campers who bring a cell phone:

- Phones must be turned in during registration
- Phones may be checked out for use on the 1st Wednesday, Saturday, 2nd Tuesday, and last Friday between 3:00pm and 3:30pm.
- Campers who do not bring a phone, but wish to make a call during this time, will have access to a camp phone or staff cell phone.
- Phone may be checked out daily during rest period to listen to music with headphones

Online Camp Photo Album

Photos will be posted daily to your online account starting Monday evening. Check back daily at 5:30pm for new photos.

Navigate to the photo album by logging in to your online account from our website, and then choose "photo gallery" from the left side menu.

We will also be posting stories and updates to our social media at

[instagram.com/arrowbear.music.camp](https://www.instagram.com/arrowbear.music.camp) and [facebook.com/ArrowbearMusicCamp](https://www.facebook.com/ArrowbearMusicCamp)

A link can also be found on our website.

One way emails through your online account

1. Log into your account through our website
2. From the left side menu choose "Message Center"
3. Choose "Message a Camper"

Emails will be printed and placed in the camper mailbox with the daily mail.

Commemorative Photo and Camp Roster (the 'note')

At the end of the session we will provide all the campers with a group photo and roster including contact information for all campers and staff. If you wish to have your contact information left off the roster, please let us know during check in.

Camp Store

During free time we sell a small assortment of snacks and camp gear. Camp store money must be turned into the camp for use with our store debit system. Any remaining money will be returned to the camper on the last day. We accept credit card through your online account, cash, check or money order made out to Arrowbear Music Camp. For a 2 week session we recommend \$10-\$100.

To add money online: Log into your account from our website and choose "camp store" from the left hand drop down menu.

Prices-

Snacks/Soda \$1-\$5, T-shirts \$20, Sweatshirts \$30-\$40, Other camp gear \$3-\$35

The camp store will be open before after the concert. At this time we will accept credit card payments.

Laundry

There is one cold water washing machine, unscented laundry pods, and clothesline available for use if need.

Visiting Policy

Please contact the office if you plan to visit.

thank you

We are looking forward to seeing you all!!!





Arrowbear Music Camp

Packing List



Clothing

Enough comfortable outdoor clothing for many days- Example:

- Jeans/ long pants
- Shorts
- T-shirts/ tank tops
- Sweat shirt/ sweater
- Pajamas
- Socks
- Underwear
- Closed-toe shoes
- Bag or collapsible hamper to hold dirty clothing
- Concert clothes: slacks, khakis or skirts; blouse, polo, or other collared shirt

Music Related

- Instrument, plus addition needed items (strings, reeds, mutes, etc.)
- Pencil with eraser
- Clothespins to hold music in on windy day
- Music and accompaniment if you plan on performing during optional activity times
- Any additional instruments you play that you may like to use for free time or optional performance time

Optional

- Blankets
- Swimsuit
- Pool towel
- Hat
- Sunglasses
- Hiking shoes/ hiking gear
- Sandals
- Snack food in a labeled container
- Stamps and envelopes
- White clothing for tie-dying
- Camera
- Books
- Art supplies
- Headphones
- Games

Miscellaneous

- Water Bottle
- Flashlight
- headlamp with red-light (for night hikes)



Toiletries

- Towel and washcloth for shower
- Shower sandals (flip flops)
- Toothbrush, toothpaste, floss
- Shampoo/conditioner and soap
- Sunscreen and chapstick
- Bug repellent
- Any other personal items you may need

Bedding

- Warm Sleeping Bag- temps may drop below the 40's- please pack accordingly
- Pillow
- Fitted sheet (to cover vinyl mattress)